

**10/100Mbps Dual Speeds  
Fast Ethernet  
PC Card Ethernet  
Adapter**

**Quick Installation Guide**

# HARDWARE INSTALLATION

This chapter describes how to install the dual speeds Fast Ethernet PC Card in your notebook computer and connect it to network.

The PC Card could be connected to either 100Mbps Fast Ethernet or 10Mbps Ethernet over unshielded twisted pair (UTP) cable. The PC Card has the ability automatic sensing and operating on either speed without manual reconfiguration.

Please refer to **Software Installation** on how to install network drivers using menu driven installation utility.

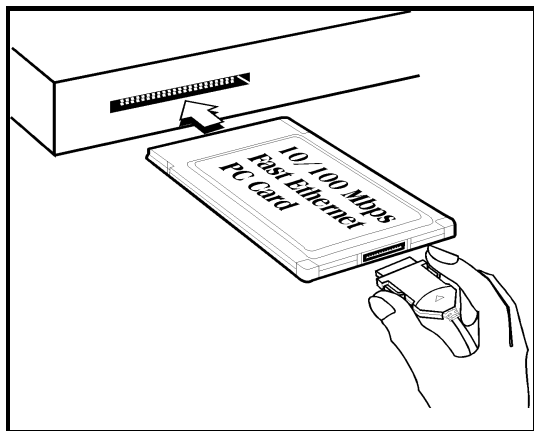
## Inserting the Dual Speeds Fast Ethernet PC Card

1. Hold the PC Card with wide connector toward the slot and the brand label facing upward.
2. Insert the PC Card and push it firmly into the bottom.

(Please see the figure on the next page for reference)

## Removing the Dual Speed Fast Ethernet PC Card

It's quite different for various computer mechanical designs. Please refer to the PC Card removal instruction in the document for your notebook computer.



## Connecting and Removing the Cable of Media Coupler to the PC Card

Grasp the PC Card 15-pins connector at the end of the media coupler with the pointing triangle facing upward. Gently insert it into the mating connector on the PC Card until it clicks in place at both sides.

Attention should be paid when removing the 15-pins connector. Please press the both sides of the connectors before dragging out of the PC Card.

## Connecting to the Network

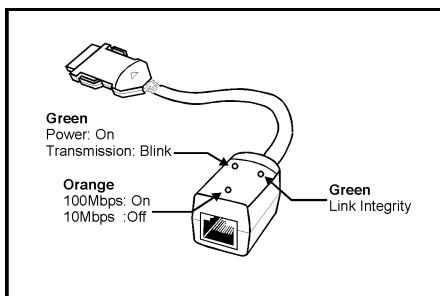
Connect unshielded twisted pair (UTP) cable to the RJ-45 connector of media coupler before loading any network driver.

● For operation in the 100Mbps (100Base-TX) Ethernet network, a Category 5 unshielded twisted pair (UTP) cable

should be used to connect between media coupler and 100Mbps hub or switch.

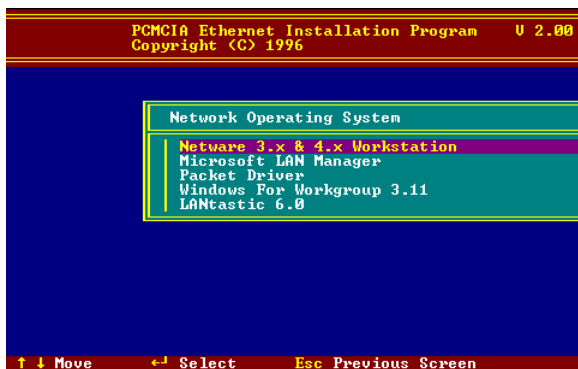
symbol 108 \f "Monotype Sorts" \s 6● For operation in the 10Mbps (10Base-T) Ethernet network, Category 3, 4 or 5 unshielded twisted pair (UTP) cable could be used to connect between the media coupler and a 10Mbps hub or switch.

## LED Indicators



# SOFTWARE INSTALLATION

Plug the driver diskette into the floppy drive and set the current drive to the floppy drive. Then run **INSTALL** to install the real mode drivers such as ODI or NDIS 2.x or Packet Drivers into the target disk.



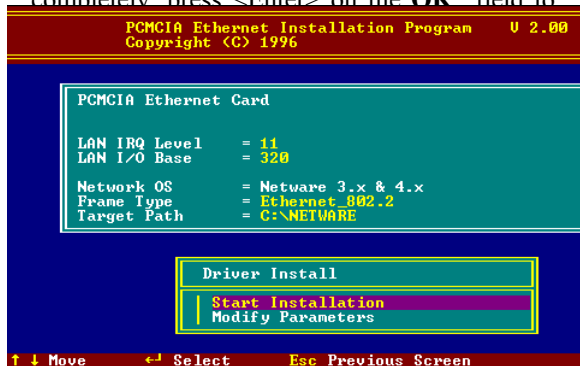
## Novell Netware

There are two methods to install the Netware client ODI driver, the menu installation and Netware 3.12 or 4.x Client installation.

### **Menu Installation**

- 1.Run **INSTALL.EXE** from the root directory of driver diskette.
- 2.Select **Netware 3.x and 4.x Workstation**” item from menu.

- 3.If current settings are acceptable, select **Start Installation** and go to step 5. Otherwise, select **Modify Parameters** to make settings changed
- 4.Move cursor to focus on the setting you want to make change and press <Enter>” to select a fit value. When the configurations are set completely press <Enter> on the **OK**” field to



If you wanted to install the ODI driver by manual, you may follow the instructions list below.

- 1.Copy the files LE100ODI.COM and NET.CFG from the path \NETWARE and the file LANEN.EXE from the path \ENABLER in the driver diskette into the Netware client directory containing Novell's LSL.COM, IPXODI.COM and NETx.COM files.

2. Using a text editor to edit the NET.CFG for setting the default frame type. In the Netware server the frame type is set to 802.3 for NW3.11 and 802.2 for NW3.12 and NW4.x. The frame type must be set to the same with the server or the client could not login to the server.

3. Follow Novell's instructions on using ODI programs. You can substitute the LE100ODI.COM whenever a reference is made to the **Hardware Specific Module**.

4. A typical ODI workstation startup batch file includes:

>LANEN /IRQ=dd /IOP=xxx Card Enabler

>LSL ;Link Support Layer Module provided by  
Novell

>LE100ODI ;Hardware Specific Module

>IPXODI ;IPX Protocol Stack Module provided by  
Novell

>NETx ;Shell Support Module provided by Novell

>LOGIN

## **Novell Client Installation**

1. Run the NetWare Client Install V1.21

- Get the 4 Client disks from the network administrator, or
  - Run the \NWCLIENT\INSTALL.EXE in a previous Installation
- 2.A message appears on the screen asking you whether or not you want the program to perform modifications on your AUTOEXEC.BAT and CONFIG.SYS files.
  - 3.Answer "Yes". The program then modifies your AUTOEXEC.BAT and CONFIG.SYS files accordingly and creates backup copies.
  - 4.The following message appears:
    - Install support for MS Windows? (Y/N):
  - 5.Answer accordingly and provide a path if necessary.
  - 6.The program displays the following:
    - Configure your workstation for backup by a NetWare server running software such as BACKUP? (Y/N):
  - 7.Answer accordingly and provide a path if necessary.
  - 8.Select a driver for your network board.
  - 9.From the driver list, select **Other Drivers**.



**10.**Go to the Insert the Driver Disk dialog box and specify the path where the ODI driver and INS files reside. For example: C:\ODI.DOS.

**11.**Press **Enter** and select the target ODI driver.

**12.**Specify the driver's optional settings.

**13.**Press F10 to save to new configuration.

**14.**Highlight "Install press here" and press <Enter> to install.

The program copies the necessary files for NetWare Client. Continue the installation procedure to completion. Upon completion, a new NET.CFG file will be created in your DOS directory. Typically, this file contains the following lines:

Link Driver LE100ODI

#FRAME Ethernet\_802.3

FRAME Ethernet\_802.2

:

**15.**Copy the file LANEN.EXE from the directory \ENABLER in the driver diskette to Netware Client directory.

**16.**Edit the STARTNET.BAT by a text editor. Add an running LANDEN command at the beginning of the file. An STARTNET.BAT for the ODI workstation performs as the following

LANEN /IOP=nnn /IRQ=n

--Card Enabler

SET NWLANGUAGE=ENGLISH

--Set NetWare 4.X to English  
language

LSL --Link Support Layer Module  
provided by Novell

LE100ODI --Hardware Specific Module

IPXODI --IPX Protocol Stack Module  
provided by Novell

VLM --DOS Support Module provided by  
Novell

F: --Change to connected device

LOGIN xxx --Login to file server as user xxx

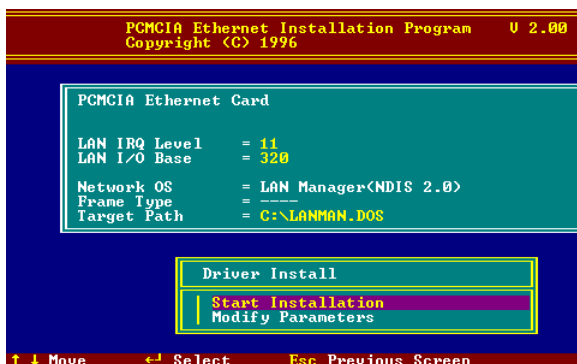
17.Run STARTNET to access the Novell network.

## MS LAN Manager

1.View the **README.TXT** on the installation diskette in the \NDIS2 directory. Before installing the drivers, please ensure that the **Microsoft LAN Manager** has been installed in the target path. The installation program will check and modify the **PROTOCOL.INI** file for LAN Manager.

2.Run **INSTALL.EXE** from root directory of driver diskette.

3. Select *Microsoft LAN Manager* item on the menu screen.
4. If current settings are acceptable, select *Start Installation*” and go to step 6. Otherwise, select *Modify Parameters*” to make setting changed.
5. Move cursor to each field you want to make a change and press <Enter> to select a fit value. When the configuration are set completely, press <Enter> on the **OK** field to exit the screen and go back to step 4.
6. Installation program starts to copy related files from driver diskette to the destination directory and modifies CONFIG.SYS and PROTOCOL.INI under usersymbol 146 \f "Parisian BT" \s 10’s agreement.
7. Please reboot the computer to load driver and start LAN Manager in batch.



## Example of PROTOCOL.INI: used by LAN Manager

[PROTMAN]

DRIVERNAME = PROTMAN\$

DYNAMIC = YES

PRIORITY = NETBEUI

[NETBEUI\_XIF]

Drivename = netbeui\$

SESSIONS = 6

NCBS = 12

BINDINGS = "LE100NDS\_NIF"

LANABASE = 0

[LE100NDS\_NIF]

; protocol.ini session for LAN driver.

IOADDRESS = 0x320

INTERRUPT = 11

DRIVERNAME = LE100NDS\$

## **Packet Driver**

- 1.Run INSTALL.EXE from root directory of driver diskette.
- 2.Select **Packet Driver** item on the menu screen.
- 3.If current settings are acceptable, select **Start Installation** and go to step 5. Otherwise, select **Modify Parameters** to make setting changed.
- 4.Move cursor to focus on the field you want to make a change and press <Enter> to select a fit value. When the configuration are set completely, press <Enter> on the **OK** field to exit the screen and go back to step 3.
- 5.Installation program starts to copy related files from diskette to the destination directory and modifies AUTOEXEC.BAT under usersymbol 146 \f "Parisian BT" \s 10's agreement.
- 6.Please reboot the computer to load the driver.

## **ODI Driver for Workgroups**

- 1.Run *Windows for Workgroups* and click *Network Setup* icon in **Network** group.
- 2.In *Network Setup* dialog box, click *Networks...* button to select the network operating system.

3. In *Networks* dialog box, check *Install Microsoft Windows Network* and *Others*, thereafter select *Novell NetWare (Workstation Shell, 3.X)* or *Novell NetWare (Workstation 4.0 and above)* and press **OK** to enter the screen of PXODI.COM and LSL.COM”
4. Press **OK** to go back the Network Setup“ screen.
5. Click on *Drivers...*” button to select network driver.
6. In *Network Drivers* dialog box, press *Add Adapter...*” button to enter *Add Network Adapter* dialog box. Select *Unlisted* or *Updated Network Adapter* and press **OK**.
7. Windows will prompt an *Install Driver* dialog box. In this time, put the driver diskette into floppy drive and press **OK**.
8. Select the *Netware ODI Driver ...*” string and press **OK**.
9. Follow Windows instructions to complete the installation and exit Windows.
10. Run INSTALL.EXE from root directory of driver diskette.
11. Select *Windows for Workgroups*” in Network Operating System screen.

- 12.**If current settings are acceptable, select ***Start Installation***” and go to step 13. Otherwise, select ***Modify Parameters***” to make settings changed.
- 13.**Move cursor to focus on the setting you want to make a change and press <Enter> to select a fit value. When the configuration is set completely, press <Enter> on the **OK** field to exit the screen and go back to step 11.
- 14.**Select ***Novell Netware Server*** as the network server you will attach to and press <Enter> key.
- 15.**Installation program starts to copy related files to the destination directory and modifies AUTOEXEC.BAT and NET.CFG under usersymbol 146 \f "Parisian BT" \s 10’s agreement.
- 16.**Please reboot the computer to have the driver take effect.

## **Windows NT 4.0**

Assumed that the Network Services already installed in the NT 4.0 system.

- 1.**Insert the Fast Ethernet PC Card into any one of PC Card Slots in system.
- 2.**Power up Windows NT 4.0

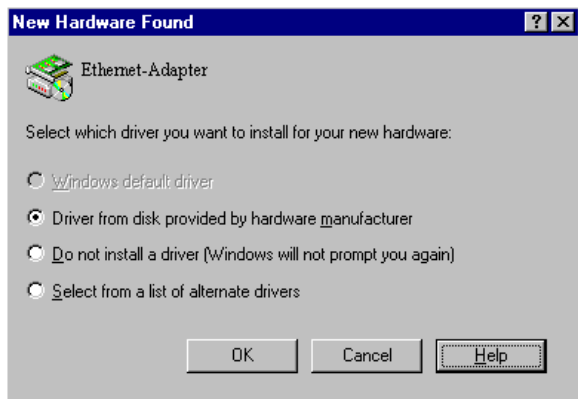
3. Open *My Computer*
4. Open *Control Panel*
5. Run the *Network*
6. Select Adapters page
7. Press *Add* to add network adapter
8. Press *Have Disk* button
9. Insert the driver disk into drive A:
10. Specify the path to "A:\ and press **OK**
11. A dialog box will appear to adjust the driver's settings. The resources assignment to the adapter must be unique in the system.
12. Press **OK** when all settings are completed.
13. Press **Close** to complete network setting

## **Windows 95 Installation**

1. Assumed that the drivers of PC Card slot are well installed. The *System Icon* in the *Control Panel* can report on its functionality. Apart from above mentioned, any questions on this layer need to be taken up with the computer's manufacturer.



2.Insert the PC Card into the slot. In *New Hardware Found* dialog box, select *Driver from disk provided by hardware manufacturer*”.



3.Please input the path, A:\ and insert driver diskette.

The driver will be installed and you may be asked for the original Windows 95 CD/disks.

4.For the first time installation, please click *Network* icon in *Control Panel* to add Protocols, Client and Service if you needed

5.Reboot the machine and the card will be fully functional.

## **Artisoft Lantastic 6.0 Installation**

1.Install LANTASTIC 6.0 first.

2. Run **INSTALL.EXE** from root directory of driver diskette.
3. Select **LANTASTIC 6.0** in Network Operating System screen.
4. If current settings are acceptable, select **Start Installation** and go to step 6. Otherwise, select **Modify Parameters** to make settings changed.
5. Move cursor to focus on each field you want to make a change and press <Enter> to select a fit value. When the configuration is set completely, press <Enter> on the **OK** field to exit the screen and go back the step 4.
6. Installation program starts to copy the related files from diskette to the destination directory and modifies CONFIG.SYS, PROTOCOL.INI, and STARTNET.BAT under usersymbol 146 \f "Parisian BT" \s 10's agreement.
7. Please reboot the computer to have the driver take effect.

## **IBM OS/2 Warp**

### **NDIS2 Driver for OS2 Warp**

Before the driver installation, please ensure that the PCMCIA Service was installed and worked

properly. If the PCMCIA Service of OS/2 Warp has been enabled already, please jump to portion B for driver installation otherwise please follow the instructions in the following to install the PCMCIA Service.

## **A. Enable PCMCIA Service of OS/2 Warp**

1. In the OS/2 Desktop group, double-click on the ***OS/2 System*** icon.
2. Double-click on the **System Setup** icon.
3. Double-click on the **Selective Install** icon.
4. Select the **PCMCIA Support** button.
5. Select **PCMCIA** system.

For example: select IBM ThinkPad 750

6. Click **OK**.
7. Click ***Install***
8. Select the source drive and directory

For Example D:\OS2IMAGE

9. Click ***Install***
10. Click **OK**

## **B. Install NDIS2 driver for IBM LAN Server 4.0**

1. In the OS/2 Desktop group, double-click on the *MPTS* icon.

2. Click on the *Configure* button.

3. Select the *LAN adapters and protocols* option.

4. Click on the *Configure* button.

5. Select the *Other adapters ...* option.

6. Insert the driver diskette and type the driver path:

A:\OS2\NDIS2

Click on the **OK** button.

7. Select *PCMCIA Ethernet Adapter*, and then click on the *Add* button.

8. Select *IBM OS/2 NETBIOS*, and then click on the *Add* button.

9. Click **OK**.

10. Click *Close*.

11. Click *Exit*.

12. Shutdown and restart your system.